



# Free Studio 3.8

A first overview of how to use AVP Display, new Expansions and new features of Advance

Author: Federico Marcassa



Confidential Property of Schneider Electric

Life Is On



## AVP Display

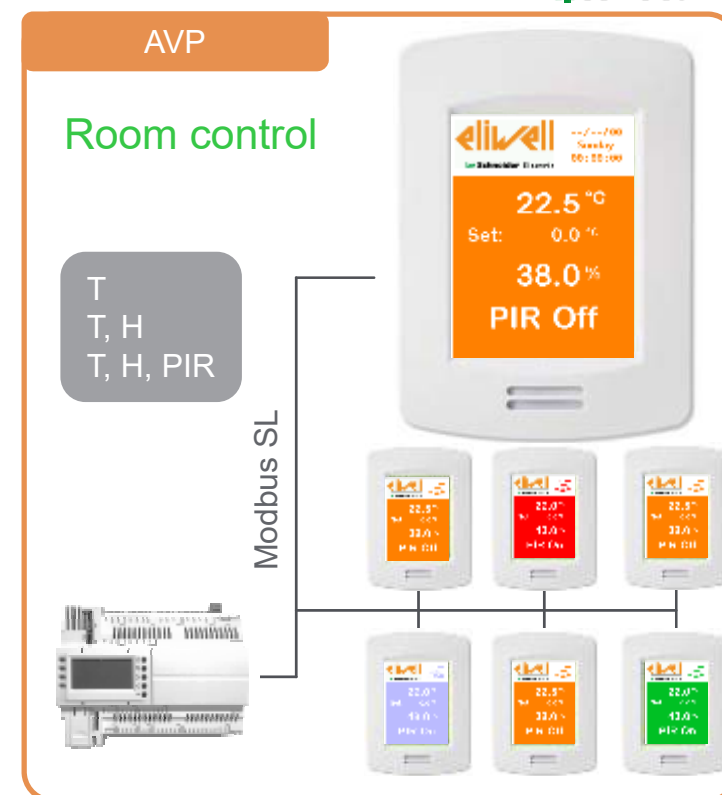
- The wall mounting color touch screen programmable with Free Studio
- Temperature, Humidity and PIR sensors embedded
- Vertical or Horizontal mounting
- Modbus Slave



## AVP Display - Wall mounting color touch screen

### Technical Characteristics

- Integrated in Free Studio software
- Same display can be use as room control (Measure, Set and show)
- 3,5 " with 320 x 240 pixels
- 256 colors
- Wall mounting
- Inside usage
- Temperature, humidity and PIR measurement
- Three Models:
- Embedded temperature
- Embedded temperature & humidity
- Embedded temperature, humidity & presence (PIR) sensors
- 24Vac/dc isolated power supply
- RS485 isolated from power supply
- External terminal resistor required










## AVP Display - Wall mounting color touch screen

Free Studio 3,8

### > Fully integrated in Free Studio 3.8:

- Same Bios for all models, 2 software targets based on the orientation
- Application Project:
  - Programs (e.g. On/Off manager, Time Bands,...)
  - Modbus registers declaration
  - Eeprom parameters declaration
- User Interface for the graphics
- Device for full download



| Add new device to project   |                       |     |
|---|-----------------------|-----|
|  | M171P Display         | 423 |
|  | M171P Blind           | 477 |
|  | Display for M171 Perf | 476 |
|  | M171P Flush Mounting  | 489 |
|  | M172P                 | 596 |
|  | M172DCL landscape     | 659 |
|  | M172DCL portrait      | 659 |



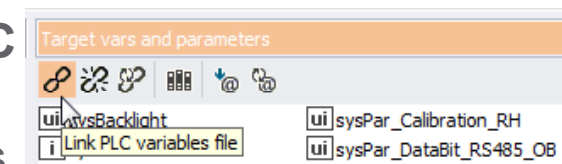
## AVP Display - Wall mounting color touch screen

Free Studio 3,8



### > User Interface vs Application

- UI and AP projects **have to** be linked through: **“Link PLC project”**
- **“Refresh PLC variables”** if you add new E2 parameters or Status variables to Ap project
- You **can’t** link the parameter file of a Advance project, Display is **modbus slave**



### > Connection:

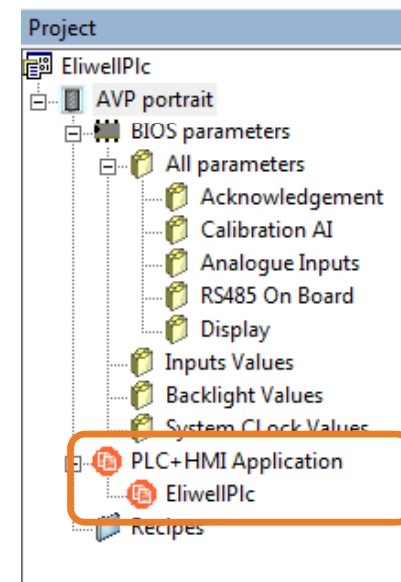
- Connection is not required in case of AVP (but it can be used as usual if you are used to)



# AVP Display - Wall mounting color touch screen

## Project Download

- > Only **one** file is downloaded on the target:
  - When you download Ap also the linked UI project is downloaded (and viceversa)
  - In order to have “Source Ok” it is suggested to perform the last download from Ap (also because E2 is downloaded from Device...)
  - Max Project size:
    - 736KB for code, 64KB for data, 4MB for fonts and images
    - Eeprom 4096 Word, Status Variables 5000 Word
- > From Device the overall file can be downloaded in one shot
- > Physical connection to target through:
  - microUSB, Modbus protocol address 1
  - Modbus RTU, default address 1, 38.4,E,8,1
  - Ethernet bridge through Advance/Evolution controller



# AVP Display - Wall mounting color touch screen

## Sensors & Display



### > Sensors:

- Temperature: 0.1°C Resolution
- Humidity: 1% Resolution (-32767 if sensor not present)
- PIR: 1=Presence (-32767 if sensor not present)

### • Backlight configuration:

**Backlight Values**

| Address | Name         | Value   | Um  | Default | Min | Max | Description       |
|---------|--------------|---------|-----|---------|-----|-----|-------------------|
| 8211    | sysBacklight | 2=Timed | num | 2=Timed | 0   | 2   | Display backlight |
|         |              | 0=Min   |     |         |     |     |                   |
|         |              | 1=On    |     |         |     |     |                   |
|         |              | 2=Timed |     |         |     |     |                   |

**Display**

| Address | Name                  | Value      | Um  | Default    | Min | Max   | Description             |
|---------|-----------------------|------------|-----|------------|-----|-------|-------------------------|
| 8204    | Par_Orientation       | 1=Portrait |     | 1=Portrait | 0   | 1     | Display orientation     |
| 8205    | Par_Language          | 1          | num | 1          | 0   | 65535 | System Language         |
| 8207    | Par_BackLightTime     | 30         | sec | 30         | 0   | 3600  | Backlight time          |
| 8250    | Par_BackLightMinValue | 5          | %   | 5          | 0   | 100   | Backlight minimum value |

# AVP Display - Wall mounting color touch screen

## User Interface

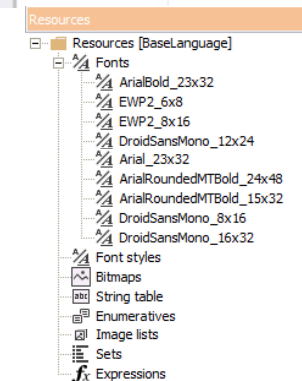
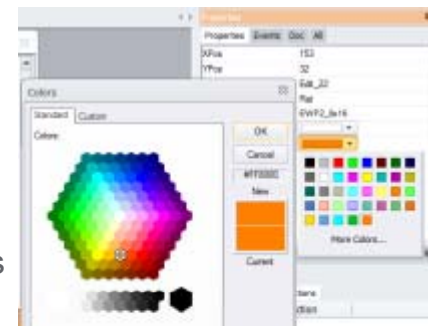
> Graphic managed via User Interface in the usual way but with more features:

- Colors
- Fonts
  - Proportional fonts are supported
  - A font can be linked to a language through the Font styles
- Check Box ☒
- Button properties:

- Type: Normal / Toggle
- Press variable is set when button is pressed
- Selection variable allows to use a button as Led

|                    |          |
|--------------------|----------|
| Press variable     | bRun     |
| Selection variable | On press |
| Type               | Toggle   |

|                    |        |
|--------------------|--------|
| Selection variable | bRun   |
| Type               | Normal |





## AVP Display - Wall mounting color touch screen

### Value Editing

> When you enter in edit mode a virtual keyboard is shown:

Numbers

|   |   |   |     |
|---|---|---|-----|
|   |   |   |     |
| 1 | 2 | 3 | Esc |
| 4 | 5 | 6 | X   |
| 7 | 8 | 9 | ↵   |
| . | 0 | - |     |

Strings

|     |   |     |     |
|-----|---|-----|-----|
|     |   |     |     |
| 1   | 2 | 3   | Esc |
| 4   | 5 | 6   | X   |
| 7   | 8 | 9   | ↵   |
| abc | 0 | ABC |     |

|      |     |      |     |
|------|-----|------|-----|
|      |     |      |     |
| @.?, | ABC | DEF  | Esc |
| GHI  | JKL | MNO  | X   |
| PQRS | TUV | WXYZ | ↵   |
| 123  | ␣   | abc  |     |

|      |     |      |     |
|------|-----|------|-----|
|      |     |      |     |
| @.?, | abc | def  | Esc |
| ghi  | jkl | mno  | X   |
| pqrs | tuv | wxyz | ↵   |
| 123  | ␣   | ABC  |     |

Enumeratives

|     |
|-----|
| Esc |
| ⏶   |
| ⏷   |
| ↵   |

|     |   |   |   |
|-----|---|---|---|
| Esc | ⏶ | ⏷ | ↵ |
|-----|---|---|---|



## AVP Display - Wall mounting color touch screen

### Useful New Target Vars

- > sysLCDPressed: gives coordinates of last press, last release and if LCD is currently pressed
  - It could be used for page timeout
- > sysMODBUS\_msg\_received: counter of modbus messages received
  - It could be used for communication alarm
- > sysPar\_Orientation: display orientation



## AVP Display - References



| Eliwell Part No | Eliwell Name                        |
|-----------------|-------------------------------------|
| AVP11000W0500   | FREE AVP1100 /C                     |
| AVP12000W0500   | FREE AVP1200 /C                     |
| AVP13000W0500   | FREE AVP1300 /C                     |
| AVP100W0P0500   | FREE AVP1000 /P WHITE (coming soon) |
| AVP100G0P0500   | FREE AVP1000 /P GREY (coming soon)  |
| AVA00WMRC0000   | FREE AVP WALL REAR COVER WHITE      |
| AVA00WMRC0001   | FREE AVP WALL REAR COVER GREY       |



## New Expansions EVE6000 and EVE10200






- 12 or 28 I/Os in 4 DIN
- Different I/O mix



## Expansions EVE6000 and EVE10200

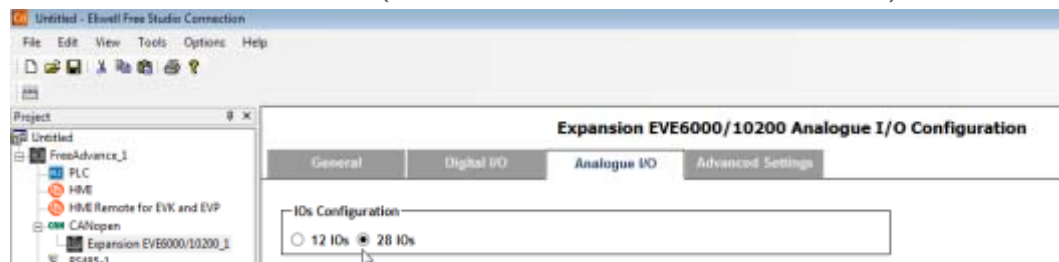
### Connection

> Same Bios:

| Catalog   |         |                         |
|---|---------|-------------------------|
| Device name   | Version | Description             |
|  Keyboard EVK            | 476     | Keyboard EVK            |
|  FreeEvolution EVP       | 489     | FreeEvolution Panel EVP |
|  Expansion EVE 7500      | 460     | Expansion EVE 7500      |
|  Expansion EVE 4200      | 5/5     | Expansion EVE 4200      |
|  Expansion EVE6000/10... | 640     | Expansion EVE6000/10200 |

> Easy configuration inside Connection (similar to EVE4200):

- IO Model can be switched by radio button
- Due the new 28 IO exp. the maximum number of expansion is 7.
- Wit mix of expansion, consider that the limit is related to the maximum IOs that can be reference in Connection (AI=72, DI=96 ,AO=60 ,DO=84).



# Expansions EVE6000 and EVE10200

## Use of FDI

If you use FDI, remember to configure the refresh period used by expansions to send updated value to the PLC:



**Expansion EVE6000/10200 Configuration**

General Digital I/O Analogue I/O **Advanced Settings**

Add Remove

| # | Label   | Index | SubIndex | Type | Value | Timeout |
|---|---------|-------|----------|------|-------|---------|
| 1 | Cfg_AD1 | 3d8e  | 0        | UINT | 2     | 100     |
| 2 | Cfg_AD2 | 3d8f  | 0        | UINT | 2     | 100     |

**Variables List**

Filter:

- 3d8e.0 Cfg\_AD1 (UINT)
- 3d8f.0 Cfg\_AD2 (UINT)
- 3d99.0 PWM\_frequency\_AD1\_AD2 (UINT)
- 3d9a.0 PWM\_polarity\_AD1\_AD2 (UINT)
- 3d34.0 Addr\_CAN\_OB (UINT)
- 4268.0 SendPeriodFD1 (UINT)**
- 4268.1 SendPeriodFD2 (UINT)**
- 2150.0 DOL1 (BOOL)
- 2151.0 DOL2 (BOOL)
- 2152.0 DOL3 (BOOL)
- 2153.0 DOL4 (BOOL)
- 2154.0 DOL5 (BOOL)
- 2155.0 DOL6 (BOOL)
- 2156.0 DOL7 (BOOL)

OK Cancel

| CAN On Board |               |       |     |         |     |       |
|--------------|---------------|-------|-----|---------|-----|-------|
| Address      | Name          | Value | Um  | Default | Min | Max   |
| 15780        | Addr_CAN_OB   | 1     | num | 1       | 1   | 127   |
| 17000        | SendPeriodFD1 | 1000  | ms  | 65535   | 0   | 65535 |
| 17001        | SendPeriodFD2 | 1000  | ms  | 65535   | 0   | 65535 |

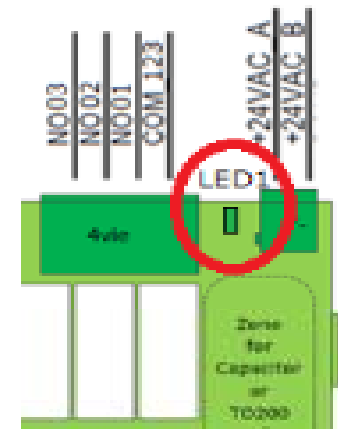
## Expansions EVE6000 and EVE10200

### > Can Network wiring:

- Can Serial not isolated (like Advance)
- Same prescriptions about Can G of the EVE4200

### > Green Led helps understand Can node status:

- Closed to power supply connectors,
- On when expansion is powered and microcontroller runs.
  - At power-on/reset the Led blinks at high frequency for a while
- Blinks when expansion is Operational
- Blinks at high frequency during a firmware upgrade.
- Off when there is no power or the microcontroller is not working



## New features of Advance

- Modbus TCP Master
- FTP client / server
- Cybersecurity
- SNTP





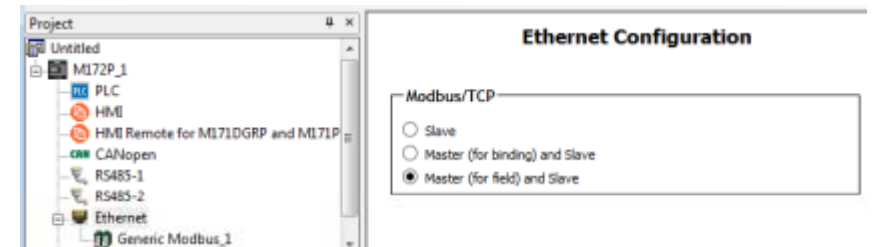
# Free Studio 3.8 & Advance Firmware Enhancements

## Modbus TCP Master

### > Easy Management through Connection Software:

- Same use as Master RS485
  - IP address and Unit ID instead of rs485 slave address
- Binding still available for back compatibility
- Up to 3 slaves (server) can be managed
- Added Command 5 Write Single Coil (also on RS485)
- sysMbTcp\* target vars allows monitoring node status

| Catalog      |         |  |
|--------------|---------|--|
| Device name  | Version | Description                                  |
| Modbus FC-01 | 1       | Read Coils - Function 01 (0x01)              |
| Modbus FC-02 | 1       | Read Discrete Inputs - Function 02 (0x02)    |
| Modbus FC-03 | 1       | Read Holding Register - Function 03 (0x03)   |
| Modbus FC-04 | 1       | Read Input Registers - Function 04 (0x04)    |
| Modbus FC-05 | 1       | Write Single Coil - Function 05 (0x05)       |
| Modbus FC-06 | 1       | Write Single Register - Function 06 (0x06)   |
| Modbus FC-15 | 1       | Write Multiple Coils - Function 15 (0x0F)    |
| Modbus FC-16 | 1       | Write Multiple Register - Function 16 (0x10) |



### Generic Modbus node

General

Settings

Name:

IP address:

Node number:  (0 .. 15)

Unit ID:  (1 .. 255)

Wait before send:  ms (1 .. 255)



# Free Studio 3.8 & Advance Firmware Enhancements

FTP Server / Client



## > FTP server features :

- Service enable/disable run time using `sysFTP_Service()`
- Configurable of user and password using `sysFTP_Authentication()`
- Configurable list of up to 3 IP addresses which will be allowed to connect using `sysFTP_AcceptClient()`. If not used or list is empty any client is accepted
- Up to 3 additional guest users with filtered access to up to 10 files using `sysFTP_AuthentGuest()`

## > FTP client commands using `sysFTP_ClientCommand()` :

- Puts a file on FTP server
- Retrieves a file from FTP server
- Append or Delete file on FTP server
- Makes or Remove an empty directory on FTP server



# Free Studio 3.8 & Advance Firmware Enhancements

Cybersecurity



## > HTTP:

- Service enable/disable run time using `sysHTTP_Service()`
- Configurable of user and password using `sysHTTP_Authentication()`
- Configurable list of up to 3 IP addresses which will be allowed to connect using `sysHTTP_AcceptClient()`. If not used or list is empty any client is accepted
- Up to 3 additional guest users with not allowed access to up to 10 files using `sysHTTP_AuthentGuest()`.
- Dedicated home page to the guest user with automatic redirect to page `index<guest index>.htm`

## > Modbus TCP Slave:

- Service enable/disable by parameter `Port_ETH_PI` (65535=Disabled)
- Configurable list of up to 3 IP addresses which will be allowed to connect using `sysMbS_AcceptClient()`. If not used or list is empty any client is accepted



Life Is On

Schneider  
Electric

## Free Studio 3.8 & Advance Firmware Enhancements

Other

### > SNTP - Simple Network Time Protocol:

- Get current date & time using `sysSNTP_GetTime()`

### > New Target Vars:

- `sysTskTmdMaxExeTime` maximum execution time of Timed Task
- `sysTskBckMaxExeTime` maximum execution time of Background Task

